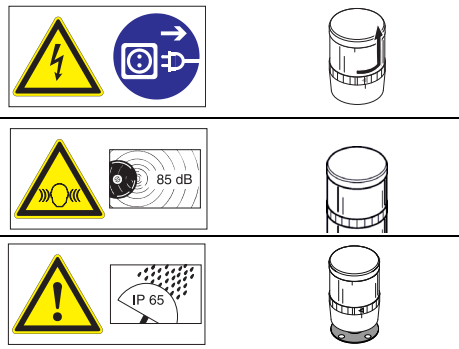
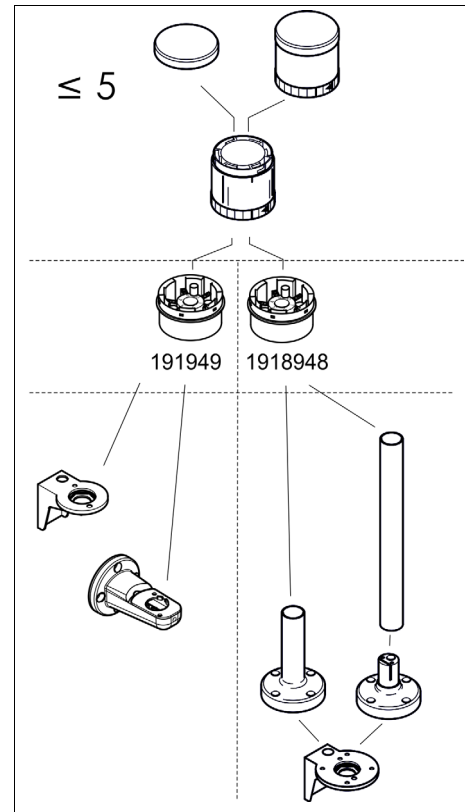


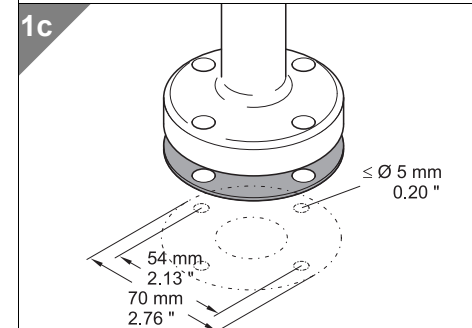
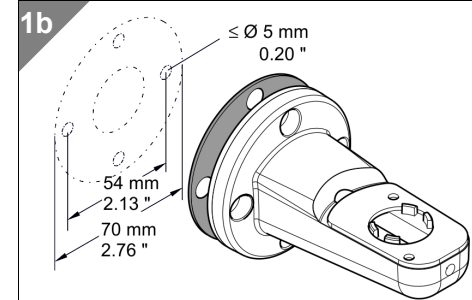
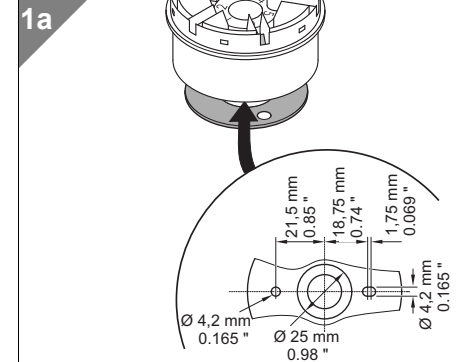
- Ⓓ Anschluss **ausschließlich** durch ausgebildete Elektro-Fachkräfte.
- ⒼⒷ Electrical connection is to be made by trained electrical specialists **only**.
- Ⓕ Le branchement doit **uniquement** être effectué par des professionnels.
- Ⓜ Il collegamento deve essere eseguito **solo** da elettricisti specializzati.
- Ⓔ La conexión **sólo** debe ser realizada por electricistas debidamente formados.
- Ⓟ A ligação deve ser feita **exclusivamente** por profissional eléctrico especializado.
- ⓃⓁ De aansluiting mag **enkel** gebeuren door erkende vakmensen.
- ⒸⓏ Připojení smí **provádět** pouze kvalifikovaný personál.
- Ⓟ Podłączenie **wyłącznie** przez specjalistów-elektryków.
- Ⓕ Liittäminen kuuluu **ainoastaan** koulutettujen sähköalan ammattilaisten tehtäviin.
- ⓂⓊⓢ Подключение проводится только специалистом-электриком.
- ⒻⓇ Bağlantı **sadece** eğitimli elektrik teknisyenleri tarafından yapılmalıdır.
- ⒸⓃ 布线需由专业电工执行

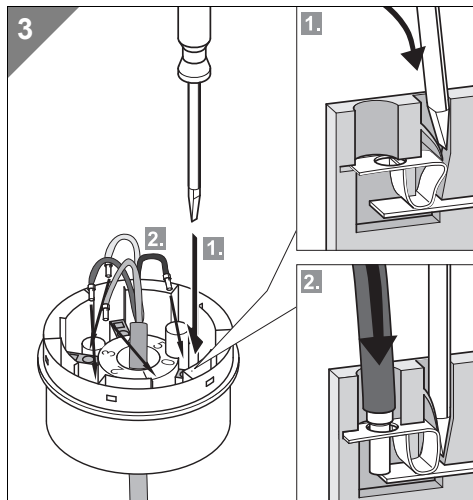
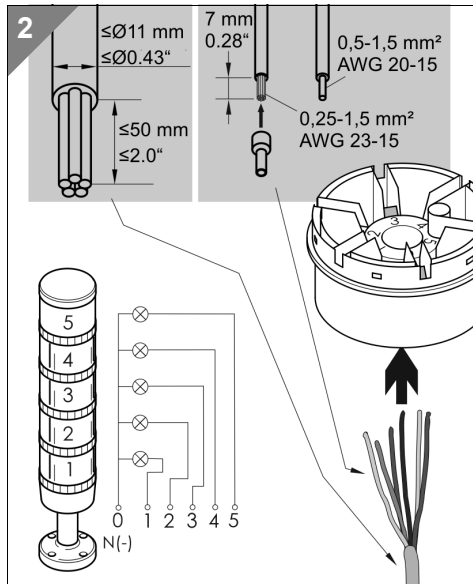
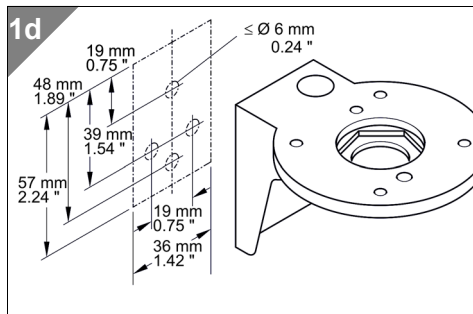


191948	12 – 240 V \approx
191949	
19195013	12 – 240 V \approx
19195015	
19195014	
19195010	
19195016	
19195124	85 dB, 24 V \approx , 25 mA
19195111	85 dB, 115 V \approx , 25 mA
19195123	85 dB, 230 V \sim , 25 mA
	BA 15 d, < 42 mm, 5W



- 1
- 1a - 191949
1b - 120131
1c - 120130, 120129
1d - 120132, 120133





4

4a - 191949
 4b - 191949 + 120133
 4c - 191948 + 120128/120130
 4d - 120130, ..., + 120132

